

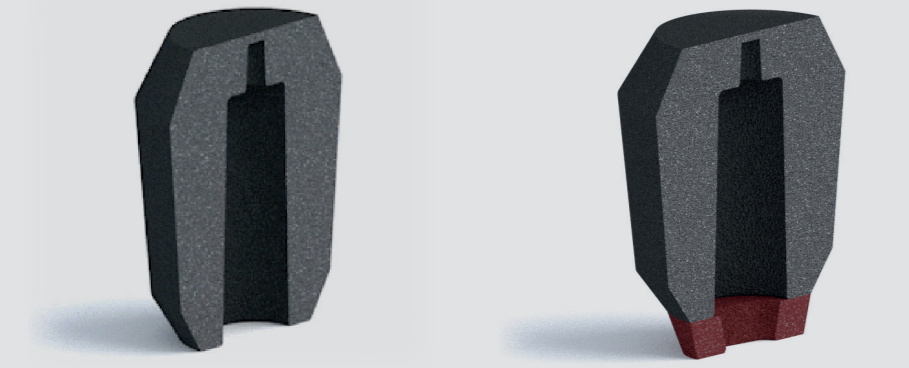


# FEEDING TECHNOLOGY

FEEDING SYSTEMS FOR JOBBING APPLICATION  
AND AUTOMATIC MOULDING LINES



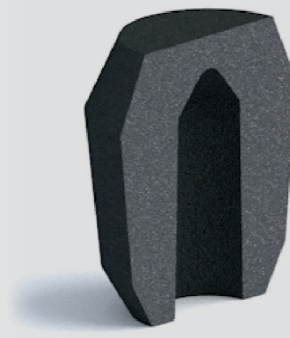
## FEDEX HD V SLEEVES



- highly exothermic spot feeding technology
- modulus 0.75 - 5.2 cm
- smallest contact areas
- various breaker cores

a+h

## FEDEX HD VS-Sleeves



- self-centering feeder types
- modulus 0.75 - 4.9 cm

- exothermic locator core
- various locator cores

a+h

## FEDEX HD K



- contact area = aperture
- low maintenance locator pins

- improved feeder knock-off
- modulus 0.95 - 4.5 cm

a

## FEDEX HD VAK Sleeves



- contact area = aperture
- improved feeding capacity

- improved feeder knock-off
- modulus 1.2 - 3.2 cm

a

## FEDEX HD SCK Sleeve System



- modular sleeve system
- combinable from modulus 5.4 - 6.9 cm
- smallest contact areas
- highly insulating lower part

h

## FEDEX HD G Sleeves

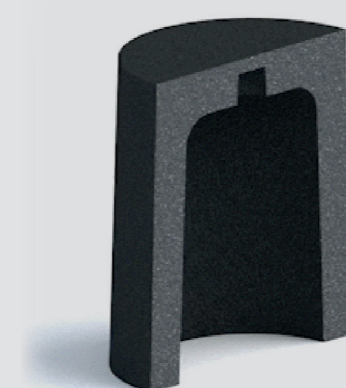


- highly exothermic parallel conical sleeves

- modulus 1.2 - 3.2 cm

a+h

## FEDEX HD P Sleeves



- highly exothermic opposite conical sleeves

- modulus 1.0 - 3.2 cm

a+h



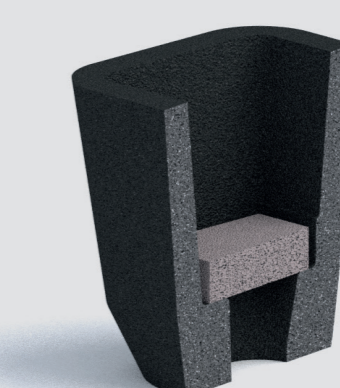
## KALPUR Sleeves



- direct pouring system with integrated filter
- maximum yield
- at jobbing application with support core
- modulus 1.2 - 7.7 cm

a+h

## KALPUR HD TAE Sleeves



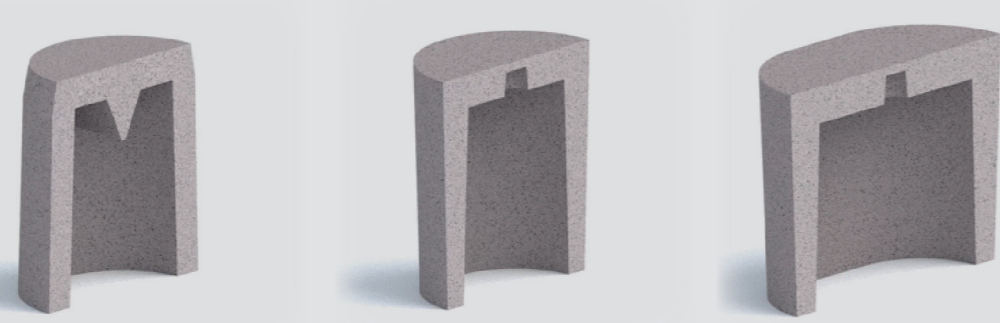
- direct pouring system for high pressure moulding lines with integrated filter

- maximum yield
- modulus up to approx. 3 cm

a



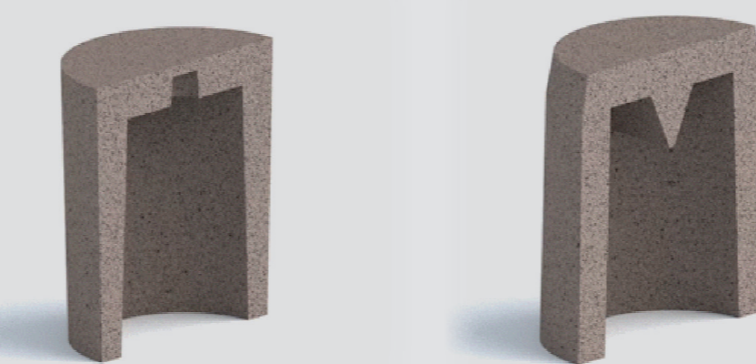
## KALMINEX 2000 Sleeves



- exothermic / insulating parallel conical sleeves
- modulus 1.0 - 4.0 cm

a+h

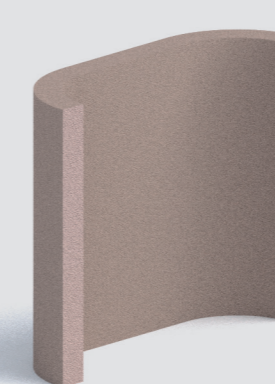
## KALMINEX SD Sleeves



- exothermic / insulating parallel-conical high-pressure resistant sleeves
- modulus 1.0 - 4.0 cm

a

## KALMINEX Sleeves

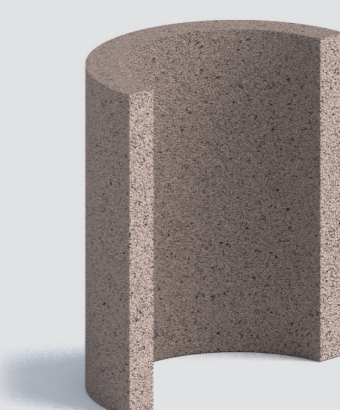


- available in **KALMINEX** or **KALMIN 70**

- modulus 2.4 - 22.0 cm

h

## KALMIN 70 Sleeves

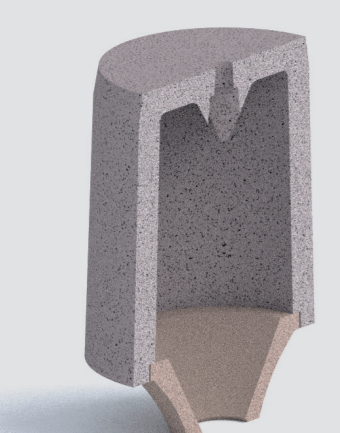


- highly insulating sleeves (I type)

- modulus 1.3 - 22.8 cm

h

## TL-Sleeve System

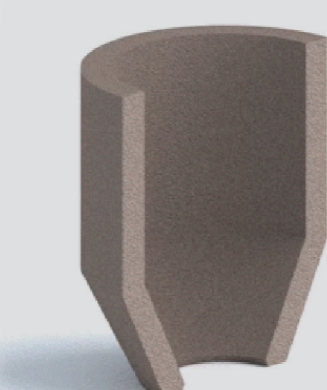


- modular sleeve system
- combinable from modulus 1.4 - 5.0 cm

- smallest contact areas
- highly insulating lower part

h

## TA-Sleeve System

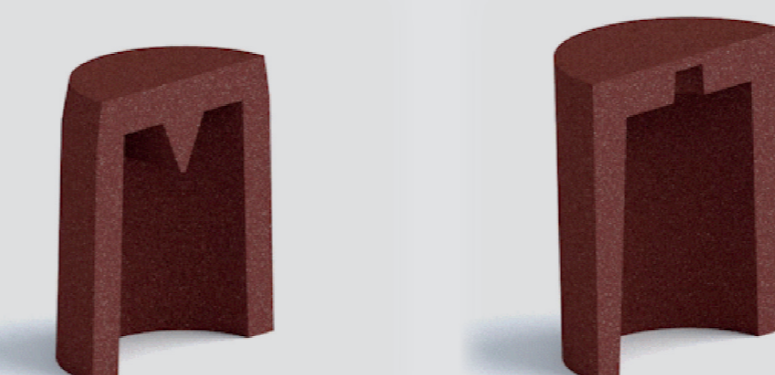


- available in **KALMINEX**, **KALMINEX 2000**, **KALMIN S** or **KALMIN 70**

- modulus 1.5 - 7.7 cm

h

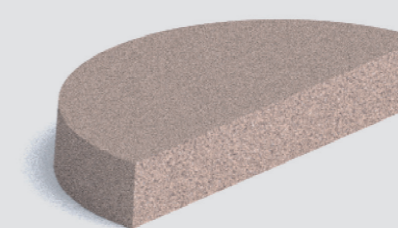
## KALMIN S Sleeve



- highly insulating parallel conical and opposite conical sleeves
- modulus 1.0 - 3.5 cm

a+h

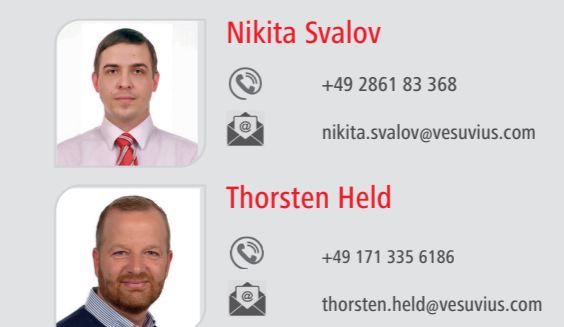
## KAPEX Lids



- insulating- or exothermic insulating covers for TA- and X or I Sleeves

h

## Your contact persons



a - automatic moulding foundries  
h - hand jobbing foundries